



SOUTH AUSTRALIAN ECONOMIC INDICATORS

EMBARGO: 11:30AM (CANBERRA TIME) THURS 1 JULY 1999

C O N T E N T S

	<i>page</i>
Notes	2
REVIEW	
South Australian overview	3
Selected features	4
TABLES	
List of tables	5
Statistical summary	6
State summary	8
State accounts	9
International accounts	10
Consumption and investment	14
Production	16
Prices	20
Labour force and demography	21
Income	24
Financial markets	25
ADDITIONAL INFORMATION	
Publications source index	26

- For more information about these and related statistics, contact Bethany Fenech on Adelaide 08 8237 7332, or refer to the back cover of this publication.

NOTES

FORTHCOMING ISSUES

<i>ISSUE</i>	<i>RELEASE DATE</i>
August 1999	2 August 1999
September 1999	1 September 1999
October 1999	1 October 1999
November 1999	1 November 1999
December 1999	1 December 1999
January 2000	2 January 2000

ABOUT THIS PUBLICATION

South Australian Economic Indicators is a monthly publication which contains the latest available data at the time of preparation for a range of statistical series that have been identified as indicators of economic activity in this State. In a number of cases the figures presented are preliminary and subject to revision in subsequent issues.

CHANGES IN THIS ISSUE

Following a review of content in this summary, a small amount of data previously published will no longer be included. If required data which was previously included cannot be found, please contact Bethany Fenech on 08 8237 7332.

SYMBOLS AND OTHER USAGES

n.a.	not available
n.y.a.	not yet available
*	subject to sampling variability too high for most practical purposes
. .	not applicable
0, 0.0	nil, or rounded to zero

ROUNDING

Where figures have been rounded, discrepancies may occur between sums of the component items and totals.

INFORMATION

All data are original, unless otherwise stated. More detailed information on each series, including explanatory and technical notes, can be obtained from other Australian Bureau of Statistics publications or alternative data sources. To assist those seeking further information a source publication for each of the series has been documented in the statistical summary.

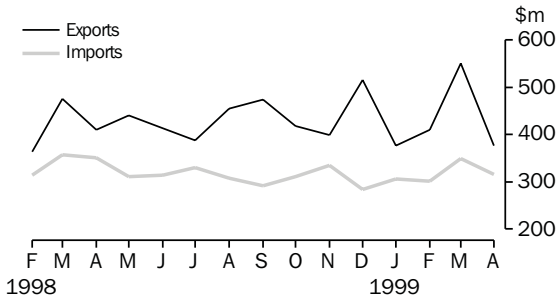
I. Crettenden
Regional Director
South Australia

OVERVIEW

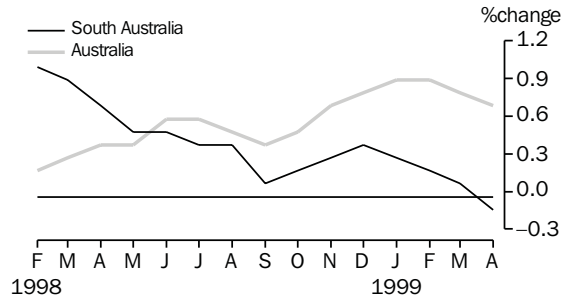
INTERNATIONAL ACCOUNTS	<p>The value of merchandise exports, where the final stage of production was in South Australia, was \$377.0m in April 1999. This represents a reduction from both March 1999 and April 1998, down 31.6% and 8.1% respectively. All selected commodity groups experienced a reduction in exports except fish and crustaceans, which increased slightly from \$18.4m to \$19.8m.</p> <p>In April 1999 the value of merchandise imports released from Customs control in South Australia fell \$33.9m to \$315.6m. Of selected commodity groups, the only increase was recorded for chemicals and textiles, up 10.7% and 8.7% respectively. The largest reductions were recorded for other manufactured goods and road vehicles, parts and accessories, down 27.6% and 6.2% respectively.</p>
CONSUMPTION AND INVESTMENT	<p>The trend estimate for retail turnover recorded a negative growth rate (-0.1%) in April 1999. Clothing and soft good retailing, hospitality and services and other retailing recorded positive growth rates for the period, however this was offset by falls in all other categories. In original terms retail turnover for April 1999 was \$848.9m.</p> <p>The trend for new motor vehicle registrations increased by 0.3% from March 1999, to 4,208. This is the third consecutive increase after a seven month decline since the June record high (4,679).</p> <p>The trend estimate at current prices for private new capital expenditure has continued to fall; the March quarter 1999 figure of \$563.0m was a decrease of 6.2% from December quarter 1998 and a decrease of 31.5% from the March quarter 1998.</p>
PRODUCTION	<p>The increase in the trend for total dwelling unit approvals has been continuous since November 1998. It has risen 6.3% in the past 5 months, with 654 dwelling units approved in April 1999.</p>
PRICES	<p>The Consumer Price Index (all groups) in Adelaide fell 0.7% from the December quarter 1998 to be 122.7 in the March quarter 1999.</p>
LABOUR FORCE AND DEMOGRAPHY	<p>The trend estimate of employed persons in South Australia has increased since July 1998. The estimate for May 1999 (658,000) is 3.3% higher than the level of 12 months ago (637,200).</p> <p>The trend estimate of the unemployment rate for South Australia has decreased since July 1998, reaching 8.6% in May 1999. A year earlier, the rate was higher at 10.0%.</p>
FINANCIAL MARKETS	<p>In April 1999 the trend estimate for the value of new housing commitments (excluding alterations and additions) increased marginally for the seventh consecutive month, up 0.7%. Seasonally adjusted, the value dropped 5.1% to \$277.0m, 1.8% above the previous April.</p>

SELECTED FEATURES

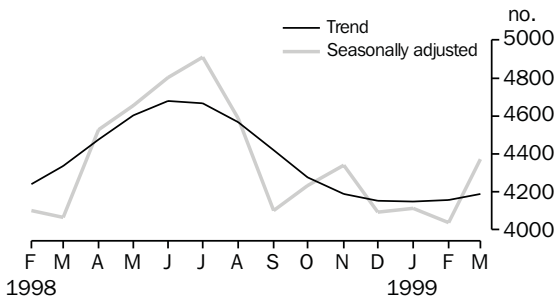
MERCHANDISE EXPORTS AND IMPORTS



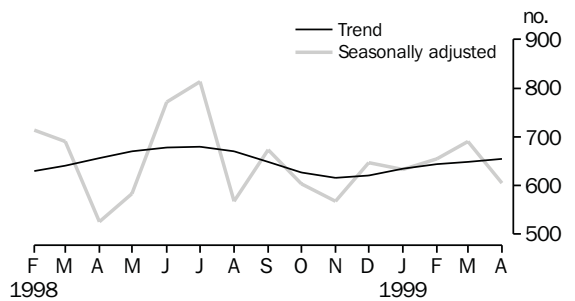
RETAIL TURNOVER: TREND



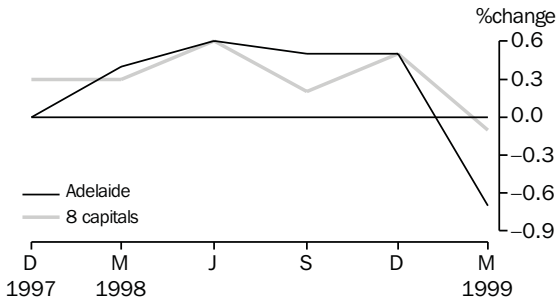
NEW MOTOR VEHICLE REGISTRATIONS



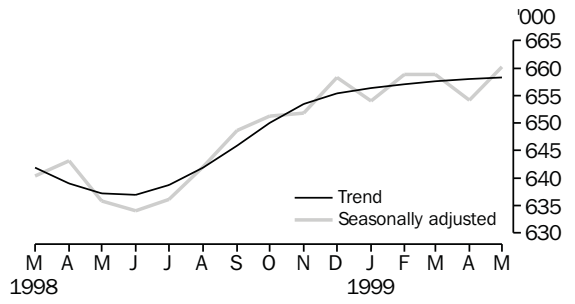
DWELLING UNITS APPROVED



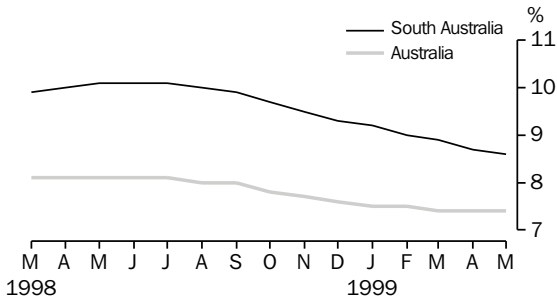
CONSUMER PRICE INDEX



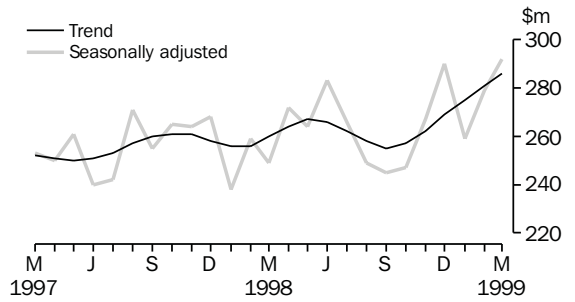
EMPLOYED PERSONS



UNEMPLOYMENT RATE: TREND



SECURED HOUSING FINANCE COMMITMENTS (a)



(a) Excludes alterations and additions. Includes refinancing.

LIST OF TABLES

			Page
STATISTICAL SUMMARY	1	Statistical summary	6
	2	State summary	8
STATE ACCOUNTS	3	State accounts at current prices	9
	4	State accounts at chain volume measures	9
INTERNATIONAL ACCOUNTS	5	Merchandise exports, by selected commodity group	10
	6	Merchandise exports, by selected countries	11
	7	Merchandise exports, by industry of origin	12
	8	Merchandise imports, by selected commodity group	13
CONSUMPTION AND INVESTMENT	9	Turnover of retail establishments, by industry—trend	14
	10	New motor vehicle registrations, by type of vehicle	14
	11	Actual private new capital expenditure, by selected industry and type of asset	15
	12	Tourist accommodation	15
PRODUCTION	13	Building approvals	16
	14	Building commencements	17
	15	Value of building work done and completed during period	18
	16	Production, livestock products and selected commodities	19
PRICES	17	Consumer price index, by group—Adelaide	20
LABOUR FORCE AND DEMOGRAPHY	18	Estimated resident population and components of population change	21
	19	Births, deaths, marriages and divorces	21
	20	Civilian labour force status	22
	21	Civilian labour force, unemployment and participation rates	23
INCOME	22	Average weekly earnings of employees	24
FINANCIAL MARKETS	23	Secured housing finance commitments	25
	24	Finance commitments	25

Indicator	Period	South Australia			Australia			SA as a % of Aust.	Source index
		Number	% change from		Number	% change from			
			Previous period	Same period previous year		Previous period	Same period previous year		
State accounts									
Domestic final demand									
Current prices trend (\$m)	Mar qtr 99	10 361	0.5	2.1	151 712	1.5	6.0	6.8	(1)
Chain volume measures trend (\$m)	Mar qtr 99	10 035	0.2	0.4	146 690	1.1	4.2	6.8	(1)
Private final consumption expenditure									
Current prices trend (\$m)	Mar qtr 99	6 473	1.1	5.6	89 533	1.9	6.8	7.2	(1)
Chain volume measures trend (\$m)	Mar qtr 99	6 278	0.7	1.6	86 525	1.5	5.0	7.3	(1)
Private gross fixed capital formation									
Current prices trend (\$m)	Mar qtr 99	1 497	-1.8	-4.8	28 492	1.4	2.9	5.3	(1)
Chain volume measures trend (\$m)	Mar qtr 99	1 444	-2.0	-5.0	27 855	1.3	2.2	5.2	(1)
Compensation of employees									
Current prices trend (\$m)	Mar qtr 99	4 865	1.3	2.7	72 483	1.3	6.6	6.7	(1)
International accounts									
Exports (\$m)	Apr 99	377.0	-31.6	-8.1	6 089.4	-11.7	-11.5	6.2	(2)
Imports (\$m)	Apr 99	315.6	-9.7	-10.0	7 702.0	-11.6	3.4	4.1	(2)
Consumption and investment									
Retail turnover									
Current prices original (\$m)	Apr 99	848.9	-4.1	0.0	11 727.6	-1.7	6.9	7.2	(3)
Current prices trend (\$m)	Apr 99	892.7	-0.1	3.5	12 274.6	0.7	8.3	7.3	(3)
1996-97 chain volume measures (\$m)	Mar qtr 99	2 471.7	-14.7	3.8	33 348.1	-12.8	5.8	7.4	(3)
New motor vehicle registrations									
Original (no.)	Apr 99	3 816	-20.6	-6.1	58 403	-23.4	-3.7	6.5	(4)
Trend (no.)	Apr 99	4 208	0.3	-5.9	66 015	-0.1	-1.0	6.4	(4)
Private new capital expenditure									
Current prices original (\$m)	Mar qtr 99	507	-23.7	-29.7	10 522	-12.0	2.1	4.8	(5)
Current prices trend (\$m)	Mar qtr 99	563	-6.2	-31.5	11 579	-0.7	-1.9	4.9	(5)
Private new capital expenditure (\$m)	1997-98	3 193	..	23.8	46 220	..	5.4	6.9	(5)
Takings, licensed hotels, motels, guest houses and apartments with facilities (\$m)									
	Dec qtr 98	49.8	17.1	9.8	1 043.2	4.5	5.7	4.8	(6)
Production									
Dwelling unit approvals									
Original (no.)	Apr 99	568	-24.3	13.1	12 403	-7.9	-11.4	4.6	(7)
Trend (no.)	Apr 99	654	0.9	-0.3	12 976	-0.3	-4.3	5.0	(7)
Dwelling units commenced (no.)	Dec qtr 98	1 932	-2.4	1.4	36 174	-8.9	-6.5	5.3	(8a)
Value of non-residential building approvals (\$m)									
	Apr 99	22.7	-59.5	-34.4	799.0	-24.9	-36.0	2.8	(7)
Value of total building activity									
Commenced (\$m)	Dec qtr 98	390.6	11.4	0.7	8 054.4	-4.9	-6.1	4.8	(8)
Work done (\$m)	Dec qtr 98	383.0	-0.2	-2.0	9 167.2	5.6	10.6	4.2	(8)
Work yet to be done (\$m)	Dec qtr 98	334.9	7.6	0.0	12 934.9	-6.2	5.4	2.6	(8)
Value of engineering construction work done (\$m)									
	Dec qtr 98	245.9	0.6	-17.8	4 650.0	7.1	11.7	5.3	(9)
Manufacturing production									
Red meat (tonnes)	Mar qtr 99	44 168	-9.8	-24.7	725 901	-3.6	-1.0	6.1	(11)
Mineral exploration expenditure (other than for petroleum) (\$m)									
	Mar qtr 99	7.6	-14.6	-17.4	165.9	-30.8	-24.7	4.6	(12)

Indicator	Period	South Australia			Australia			SA as a % of Aust.	Source index
		Number	% change from		Number	% change from			
			Previous period	Same period previous year		Previous period	Same period previous year		
Prices(a)									
CPI—All groups (index no.)	Mar qtr 99	122.7	-0.7	0.8	121.8	-0.1	1.2	..	(13)
Price index of materials used in house building (index no.)	Mar qtr 99	125.1	-0.1	1.1	119.5	-0.2	0.7	..	(14)
Price index of materials used in building other than houses (index no.)	Mar qtr 99	115.6	0.0	0.5	115.2	0.0	1.0	..	(15)
Price index of established houses (index no.)	Mar qtr 99	113.7	0.6	-0.3	131.3	1.8	5.7	..	(16)
Price index of project homes (index no.)	Mar qtr 99	117.9	1.5	3.7	113.8	1.3	3.1	..	(16)
Labour force and demography									
Population (resident at end qtr) ('000)	Dec qtr 98	1 490.4	0.1	0.5	18 871.8	0.3	1.3	7.9	(17)
Short-term overseas visitor arrivals (no.)	Mar 99	8 529	-18.0	5.8	389 016	-2.4	14.9	2.2	(21)
Short-term resident departures (no.)	Mar 99	12 753	41.7	9.2	268 888	35.5	9.1	4.7	(21)
Labour force									
Original ('000)	May 99	721.8	1.0	2.3	9 405.3	-0.1	1.1	7.7	(18)
Trend ('000)	May 99	720.4	-0.1	1.7	9 415.8	0.1	1.0	7.7	(18)
Employed persons									
Original ('000)	May 99	658.1	0.4	3.8	8 716.5	0.0	1.7	7.6	(18)
Trend ('000)	May 99	658.3	0.0	3.3	8 718.4	0.1	1.7	7.6	(18)
Participation rate									
Original(b) (%)	May 99	60.3	0.6	0.8	62.9	-0.1	-0.2	..	(18)
Trend(b) (%)	May 99	60.2	-0.1	0.5	62.9	-0.1	-0.3	..	(18)
Unemployment rate									
Original(b) (%)	May 99	8.8	0.5	-1.4	7.3	-0.2	-0.6	..	(18)
Trend(b) (%)	May 99	8.6	-0.1	-1.5	7.4	0.0	-0.7	..	(18)
Job vacancies ('000)	Feb 99	4.2	-12.5	27.3	66.6	-14.0	-11.8	6.3	(19)
Average weekly overtime per employee working overtime (hours)	Feb 99	5.74	-0.7	6.8	7.10	3.9	5.7	..	(19)
Industrial disputes ('000 working days lost)	Feb 99	0.8	..	166.7	47.6	473.5	20.8	1.7	(20)
Income									
Average weekly earnings (full-time adults; ordinary time)									
Original (\$)	Feb 99	699.60	-0.4	2.3	744.80	0.5	3.1	..	(22)
Trend (\$)	Feb 99	702.90	0.5	4.4	745.00	0.6	3.4	..	(22)
Wage cost index (total hourly rate excluding bonuses)(c) (index no.)	Mar qtr 99	104.6	0.8	3.1	104.8	0.9	3.0	..	(23)
Financial markets									
Secured housing finance(d) (\$m)	Apr 99	276.0	-19.8	1.8	5 376.0	-16.1	17.0	5.1	(24)
Finance commitments									
Personal (\$m)	Apr 99	271.6	-15.5	19.4	4 093.9	-6.8	17.4	6.6	(25)
Commercial (\$m)	Apr 99	727.6	-17.3	56.0	10 790.8	-38.1	-21.4	6.7	(25)
Lease (\$m)	Apr 99	32.8	33.1	103.1	742.4	-10.6	8.9	4.4	(25)
Interest rates									
Banks new housing loans(b) (%)	May 99	6.50	0.00	-0.20	..	(26)
Bank loans—small, medium business(b)(e) (%)	May 99	7.45	0.00	-0.25	..	(26)
Bank loans—large business(b) (%)	May 99	7.95	0.00	-0.10	..	(26)

(a) Base year of each index 1989–90=100.

(b) Change is shown in terms of percentage points.

(c) Base year of index Sep 1997=100.

(d) Excludes alterations and additions. Includes refinancing.

(e) Rate for business loans over \$50,000.

2

STATE SUMMARY

<i>Indicator</i>	<i>Period</i>	<i>NSW</i>	<i>Vic.</i>	<i>Qld</i>	<i>SA</i>	<i>WA</i>	<i>Tas.</i>	<i>NT</i>	<i>ACT</i>	<i>Source index</i>
SELECTED INDICATORS										
CPI—All groups(a) (index no.)	Mar qtr 99	122.6	121.0	122.8	122.7	119.8	122.1	122.1	121.4	(13)
Participation rate trend (%)	May 99	61.6	62.6	65.0	60.2	65.9	58.6	72.9	71.0	(18)
Unemployment rate trend (%)	May 99	6.7	7.8	8.0	8.6	6.9	10.4	4.2	6.2	(18)
Average weekly earnings (full-time adults; ordinary time) trend (\$)	Feb 99	783.00	732.10	698.70	702.90	743.40	700.70	751.80	842.10	(22)
SELECTED INDICATORS PER HEAD OF POPULATION(b)										
State final demand										
Chain volume measures trend (\$'000)	Mar qtr 99	7.9	7.7	7.5	6.7	7.8	6.4	11.3	14.7	(1)
Retail turnover										
Current prices original (\$)	Apr 99	641.6	609.2	621.9	569.6	617.0	572.3	654.2	724.0	(3)
Current prices trend (\$)	Apr 99	669.9	625.6	662.6	599.0	654.5	592.8	690.8	755.7	(3)
New motor vehicle registrations trend (no. per '000 population)	Apr 99	3.5	3.9	3.4	2.8	3.6	2.9	4.2	3.8	(4)
Private new capital expenditure										
Current prices trend (\$)	Mar qtr 99	588.3	622.8	619.5	377.7	896.7	246.2	2314.8	317.5	(5)
Dwelling unit approvals										
Original (no. per '000 population)	Apr 99	0.623	0.728	0.661	0.381	0.895	0.267	1.097	0.476	(7)
Trend (no. per '000 population)	Apr 99	0.668	0.772	0.661	0.439	0.939	0.255	0.841	0.599	(7)
Secured housing finance(c) (\$)	Apr 99	335.2	288.9	218.1	185.2	337.7	150.7	276.9	314.2	(24)
PERCENTAGE CHANGE FROM PREVIOUS PERIOD										
State final demand										
Chain volume measures trend (%)	Mar qtr 99	1.5	0.7	1.9	0.2	-1.4	0.8	0.7	0.8	(1)
Retail turnover										
Current prices original (%)	Apr 99	-0.6	-1.3	-2.5	-4.1	-3.8	-2.8	0.3	-2.5	(3)
Current prices trend (%)	Apr 99	0.9	0.8	0.7	-0.1	0.1	0.7	0.5	0.9	(3)
New motor vehicle registrations trend (%)	Apr 99	-0.5	1.6	-2.5	0.3	0.4	2.8	3.1	-1.4	(4)
Private new capital expenditure										
Current prices trend (%)	Mar qtr 99	1.5	1.2	8.6	-6.2	-10.5	-3.3	-4.9	2.1	(5)
Dwelling unit approvals										
Original (%)	Apr 99	-9.8	-6.1	0.5	-24.3	-14.0	0.0	38.2	-17.4	(7)
Trend (%)	Apr 99	-0.8	1.6	-0.9	0.9	0.5	1.7	-1.2	-11.1	(7)
CPI—All groups (%)	Mar qtr 99	0.2	0.2	-0.2	-0.7	-0.3	-0.5	-0.5	-0.2	(13)
Participation rate trend(d) (%)	May 99	0.0	-0.1	0.0	-0.1	-0.1	0.1	0.1	0.1	(18)
Unemployment rate trend(d) (%)	May 99	-0.1	0.1	0.1	-0.1	-0.1	0.0	0.0	0.1	(18)
Average weekly earnings (full-time adults; ordinary time) trend (%)	Feb 99	1.5	0.0	0.2	0.5	-0.4	0.4	0.3	-0.8	(22)
Secured housing finance (%)	Apr 99	-17.5	-10.9	-17.7	-19.8	-15.7	-22.8	-25.4	-22.4	(24)
(a) Base year of index 1989-90 = 100.										
(b) The latest quarterly estimate of Australian resident population has been used to calculate ratios for subsequent periods.										
(c) Excludes alterations and additions. Includes refinancing.										
(d) Change is shown in terms of percentage points.										

3

STATE ACCOUNTS AT CURRENT PRICES

Period	Final consumption expenditure		Gross fixed capital formation		State final demand	Gross State product (I)	Compensation of employees
	Households	General government	Private	Public			
ANNUAL (\$m)							
1995-96	22 617	7 433	5 176	1 185	36 411	35 928	17 518
1996-97	22 920	7 477	5 772	1 274	37 444	36 434	18 140
1997-98	24 294	7 882	6 675	1 286	40 138	38 966	18 902
QUARTERLY, TREND (\$m)							
1997-98							
December	6 030	1 982	1 686	335	10 033	n.a.	4 730
March	6 129	1 988	1 730	302	10 149	n.a.	4 737
June	6 228	2 001	1 700	286	10 215	n.a.	4 727
1998-99							
September	6 320	2 024	1 602	314	10 261	n.a.	4 750
December	6 400	2 048	1 525	339	10 312	n.a.	4 803
March	6 473	2 064	1 497	336	10 361	n.a.	4 865

Source: Australian National Accounts: Quarterly State Details (Cat. no. 5206.0.40.001), and Australian National Accounts: State Accounts (Cat. no. 5220.0).

4

STATE ACCOUNTS AT CHAIN VOLUME MEASURES(a)

Period	Final consumption expenditure		Gross fixed capital formation		State final demand	Gross State product (I)
	Households	General government	Private	Public		
ANNUAL (\$m)						
1995-96	22 905	7 514	4 967	1 162	36 518	35 891
1996-97	22 920	7 477	5 772	1 273	37 444	36 434
1997-98	24 003	7 788	6 652	1 283	39 726	38 573
QUARTERLY, TREND (\$m)						
1997-98						
December	5 973	1 962	1 676	328	9 942	n.a.
March	6 044	1 956	1 696	296	9 993	n.a.
June	6 115	1 956	1 650	280	9 999	n.a.
1998-99						
September	6 182	1 968	1 550	307	10 001	n.a.
December	6 237	1 984	1 473	334	10 017	n.a.
March	6 278	1 993	1 444	333	10 035	n.a.

(a) Reference year for chain volume measures is 1996-97.

Source: Australian National Accounts: Quarterly State Details (Cat. no. 5206.0.40.001), and Australian National Accounts: State Accounts (Cat. no. 5220.0).

5

MERCHANDISE EXPORTS, BY SELECTED COMMODITY GROUP(a)

<i>Period</i>	<i>Meat and meat preparations</i>	<i>Cereals and cereal preparations</i>	<i>Wine</i>	<i>Wool and sheepskins</i>	<i>Machinery</i>	<i>Metals and metal manufactures</i>	<i>Fish and crustaceans</i>	<i>Road vehicles, parts and accessories</i>	<i>Petroleum and petroleum products</i>	<i>Total</i>
	\$'000	\$'000	\$'000	\$'000	\$'000	\$'000	\$'000	\$'000	\$'000	\$'000
1995-96	244 508	713 092	318 473	240 148	340 205	61 099	196 629	249 237	220 915	4 498 532
1996-97	182 478	745 227	397 949	260 974	378 923	542 204	191 093	655 881	286 458	5 009 345
1997-98	218 252	716 668	564 083	287 824	401 749	574 407	236 353	479 420	237 824	4 978 942
1997-98										
November	21 311	41 278	33 344	29 856	41 143	61 843	18 039	83 677	18 110	454 693
December	22 742	92 765	36 065	35 568	38 306	40 932	13 637	72 253	33 679	482 272
January	15 469	107 580	25 835	20 260	21 783	56 613	24 571	15 137	12 427	368 261
February	21 189	81 091	43 674	17 710	27 617	41 123	18 253	19 097	18 197	363 980
March	23 933	76 734	55 440	26 154	37 500	51 720	22 850	37 642	19 792	474 786
April	20 323	97 030	50 539	16 054	30 937	48 037	21 581	24 260	12 089	410 224
May	19 757	36 499	58 188	28 786	41 200	44 539	18 447	30 792	18 406	440 954
June	16 188	67 210	52 876	17 049	25 411	49 813	21 084	24 268	13 434	412 631
1998-99										
July	11 886	41 106	48 323	17 802	37 239	36 741	23 828	44 144	8 909	388 182
August	12 036	57 675	54 365	14 136	30 391	51 467	30 657	43 037	20 669	455 318
September	17 730	46 101	70 084	21 737	30 230	39 773	28 826	82 634	12 086	473 925
October	20 302	37 462	72 262	23 109	28 835	39 298	16 321	45 615	19 012	418 818
November	23 420	12 520	40 014	23 410	33 813	44 046	15 738	76 332	8 740	398 256
December	21 957	84 612	48 409	21 800	39 439	46 033	18 732	72 038	22 904	515 442
January	12 512	93 036	39 131	10 991	20 705	32 232	20 641	17 334	3 544	375 983
February	19 309	43 302	50 984	18 015	29 584	47 735	20 912	23 346	8 932	409 516
March	17 275	73 094	66 698	15 882	29 445	58 685	18 415	102 036	11 714	551 311
April	12 485	38 369	56 101	9 451	41 019	39 628	19 773	26 723	4 080	376 951

(a) Final stage of production in South Australia.

Source: Unpublished data, International Merchandise Trade.

6

MERCHANDISE EXPORTS, BY SELECTED COUNTRIES(a)

Period	European Union					East Asia				
	Unites States of America	Middle East	United Kingdom	Total European Union	New Zealand	Japan	China	Hong Kong	ASEAN	Total East Asia
	\$'000	\$'000	\$'000	\$'000	\$'000	\$'000	\$'000	\$'000	\$'000	\$'000
1995-96	279 555	525 348	287 727	691 996	376 628	672 885	293 360	202 307	574 165	2 057 946
1996-97	707 871	563 409	304 645	641 308	382 103	611 870	244 917	234 547	615 943	2 030 435
1997-98	632 203	389 766	424 251	849 932	354 723	612 218	331 489	239 652	491 564	2 023 119
1997-98										
November	92 792	20 278	26 755	56 937	25 983	65 589	33 375	28 165	65 284	224 742
December	80 392	41 986	27 798	59 759	17 406	54 762	33 218	25 272	51 166	196 158
January	19 822	45 843	16 660	37 176	23 869	39 153	24 539	27 258	34 196	155 154
February	33 828	32 808	28 219	69 543	29 889	36 608	36 830	23 072	20 162	137 566
March	63 876	57 910	33 353	78 020	37 792	48 425	37 418	21 220	39 874	180 733
April	38 373	52 361	39 893	78 611	35 943	45 057	12 599	14 654	21 024	127 024
May	43 378	27 970	46 314	99 584	32 101	51 107	28 785	20 116	25 046	160 362
June	52 213	30 122	35 019	68 106	31 172	55 368	22 009	14 993	26 900	154 564
1998-99										
July	49 983	36 832	37 794	66 456	36 659	45 130	11 003	19 773	25 676	124 710
August	34 075	33 052	45 878	81 627	33 707	73 436	23 384	16 548	45 343	181 958
September	87 466	53 605	47 456	82 396	32 194	67 693	26 358	16 476	24 026	157 084
October	39 435	43 420	50 012	83 493	31 677	39 683	33 269	20 642	29 472	143 668
November	85 490	33 540	23 357	42 687	29 456	30 424	39 460	19 539	41 004	160 830
December	72 375	108 906	31 536	82 054	31 828	50 270	17 915	25 466	39 017	170 816
January	25 721	91 222	27 983	61 848	20 912	25 422	31 133	16 119	19 791	113 457
February	33 153	39 031	32 556	77 293	29 617	51 851	20 828	21 843	36 209	156 839
March	83 844	87 010	48 737	94 949	34 141	61 925	29 232	17 618	47 119	187 723
April	45 131	34 383	35 908	72 880	29 467	31 707	17 439	14 923	41 520	130 433

(a) Final stage of production in South Australia.

Source: Unpublished data, International Merchandise Trade.

7

MERCHANDISE EXPORTS, BY INDUSTRY OF ORIGIN(a)

Period	Manufacturing								Total
	Agriculture, forestry and fishing	Mining	Food, beverages and tobacco	Petroleum, coal, chemical associated product	Metal product	Machinery and equipment	Other manu- facturing	Other industries/ confidential	
	\$'000	\$'000	\$'000	\$'000	\$'000	\$'000	\$'000	\$'000	\$'000
1995-96	1 014 521	180 241	978 332	218 353	639 267	674 131	226 496	567 191	4 498 532
1996-97	1 067 084	202 162	981 918	290 361	569 679	1 140 136	226 780	531 226	5 009 345
1997-98	1 135 588	137 851	1 205 081	292 175	615 344	994 622	262 798	335 483	4 978 942
1997-98									
November	78 371	16 715	89 418	25 488	67 645	134 105	22 038	20 913	454 693
December	127 161	28 936	88 087	26 808	45 353	121 927	21 840	22 160	482 272
January	130 921	6 767	77 125	17 938	58 347	43 235	18 390	15 538	368 261
February	112 796	805	91 561	25 843	42 638	56 040	19 488	14 809	363 980
March	124 635	13 279	116 808	23 588	55 768	86 292	29 905	24 510	474 786
April	120 229	896	105 811	22 179	51 716	64 150	20 316	24 927	410 224
May	70 552	3 524	118 987	30 653	49 662	84 612	23 947	59 017	440 954
June	98 738	10 307	105 051	24 871	52 139	59 884	17 105	44 537	412 631
1998-99									
July	80 391	916	95 544	16 951	42 744	92 690	17 418	41 528	388 182
August	88 413	8 725	98 298	34 630	53 203	9 632	19 941	61 475	455 318
September	77 554	1 066	112 615	26 209	40 577	122 096	21 894	71 914	473 925
October	70 620	9 066	121 035	27 700	41 345	85 546	21 252	42 255	418 818
November	45 312	14 644	86 095	19 311	48 123	123 267	20 329	41 175	398 256
December	117 058	7 760	101 584	32 699	51 949	121 086	22 642	60 664	515 442
January	118 567	1 112	77 470	13 355	33 004	46 517	18 209	67 749	375 983
February	99 579	9 484	100 577	19 145	50 091	63 448	21 704	45 487	409 516
March	120 962	511	113 052	23 278	63 451	145 744	29 469	54 845	551 311
April	61 832	7 738	103 414	14 253	40 818	79 117	24 966	44 815	376 951

(a) Final stage of production in South Australia.

Source: Unpublished data, International Merchandise Trade.

8

MERCHANDISE IMPORTS, BY SELECTED COMMODITY GROUP(a)

<i>Period</i>	<i>Food, beverages and tobacco</i>	<i>Petroleum and petroleum products</i>	<i>Chemicals</i>	<i>Textiles</i>	<i>Metals and metal manufactures</i>	<i>Machinery</i>	<i>Road vehicle parts and accessories</i>	<i>Other manufactured goods</i>	<i>Total</i>
	<i>\$'000</i>	<i>\$'000</i>	<i>\$'000</i>	<i>\$'000</i>	<i>\$'000</i>	<i>\$'000</i>	<i>\$'000</i>	<i>\$'000</i>	<i>\$'000</i>
1995-96	118 237	346 397	254 102	76 847	213 487	675 869	546 445	728 096	3 114 309
1996-97	136 695	505 633	225 187	79 708	223 259	868 346	538 690	695 238	3 413 043
1997-98	148 771	445 218	274 741	93 815	280 562	1 061 260	772 203	739 266	3 940 198
1997-98									
November	14 009	67 061	16 244	7 528	21 290	75 564	55 373	51 324	321 543
December	13 857	32 306	22 823	6 607	21 520	115 623	58 610	58 122	342 164
January	13 497	29 721	39 180	8 063	24 670	96 949	54 033	55 492	332 475
February	10 608	39 221	26 084	8 195	27 664	69 791	53 601	70 676	314 306
March	11 294	41 325	31 280	8 678	26 177	86 622	70 446	70 667	357 051
April	10 012	22 090	38 574	9 335	21 137	113 439	61 182	63 078	350 581
May	11 224	38 780	27 490	8 945	21 394	74 468	56 026	60 750	310 724
June	13 086	15 049	18 431	8 041	25 140	89 988	70 652	62 513	313 741
1998-99									
July	14 293	23 350	13 006	9 514	26 572	95 455	71 756	64 569	329 710
August	15 000	18 697	14 930	8 217	24 495	83 417	67 746	66 505	308 231
September	14 111	12 616	22 609	8 647	25 446	73 876	63 421	63 209	292 070
October	15 828	11 640	18 150	9 116	23 219	82 586	78 648	59 588	310 764
November	15 327	36 487	23 601	7 876	21 420	75 543	70 387	71 932	334 532
December	13 026	16 970	18 804	6 467	19 204	75 014	64 423	59 276	283 661
January	12 745	17 413	35 263	6 819	21 562	79 677	58 847	59 242	306 692
February	11 547	31 555	29 787	7 365	19 683	64 604	68 736	56 329	301 933
March	16 163	25 737	31 554	7 807	23 341	71 920	77 961	79 725	349 488
April	12 642	25 605	34 945	8 490	22 618	68 154	73 157	57 695	315 557

(a) Goods released from Customs control in South Australia.

Source: Unpublished data, International Merchandise Trade.

9

TURNOVER OF RETAIL ESTABLISHMENTS, BY INDUSTRY—TREND

Period	Food retailing	Department stores	Clothing and soft good retailing	Household good retailing	Recreational good retailing	Other retailing	Hospitality and services	Total
	\$m	\$m	\$m	\$m	\$m	\$m	\$m	\$m
1997-98								
February	378.4	93.8	45.0	92.9	33.6	81.9	120.0	849.2
March	382.4	93.7	45.8	92.1	34.1	82.5	123.7	856.7
April	385.3	93.5	46.5	91.0	34.7	82.5	128.0	862.6
May	387.2	92.9	47.3	89.7	35.3	82.2	132.7	867.2
June	389.1	92.4	47.9	88.6	35.9	81.5	136.8	871.7
1998-99								
July	391.2	92.0	48.4	87.5	36.2	81.0	139.5	875.4
August	393.7	91.9	48.7	86.7	36.2	81.0	140.4	878.6
September	396.2	91.8	48.5	86.6	35.9	81.6	139.3	879.8
October	399.3	91.5	47.9	87.3	35.2	82.9	137.0	881.8
November	404.0	91.4	47.4	88.6	34.3	84.4	134.7	884.7
December	407.6	91.4	47.3	89.6	33.4	85.7	133.2	888.0
January	409.7	91.6	47.7	89.8	32.6	86.7	132.9	890.9
February	410.3	91.6	48.5	89.5	31.9	87.4	133.6	892.8
March	409.6	91.3	49.6	88.9	31.3	87.9	134.7	893.4
April	407.6	91.1	50.8	87.9	30.9	88.2	136.0	892.7

Source: Retail Trade, Australia (Cat. no. 8501.0).

10

NEW MOTOR VEHICLE REGISTRATIONS, BY TYPE OF VEHICLE

Period	Original			Seasonally adjusted			Trend estimate		
	Passenger vehicles	Other vehicles	Total	Passenger vehicles	Other vehicles	Total	Passenger vehicles	Other vehicles	Total
1997-98									
February	3 340	640	3 980	3 413	688	4 100	3 588	654	4 241
March	3 661	687	4 348	3 441	626	4 067	3 675	660	4 336
April	3 385	678	4 063	3 820	706	4 526	3 809	666	4 474
May	3 693	686	4 379	4 005	647	4 653	3 937	668	4 605
June	4 889	872	5 761	4 172	632	4 804	4 009	670	4 679
1998-99									
July	4 411	681	5 092	4 233	678	4 911	3 992	673	4 665
August	3 864	676	4 540	3 837	751	4 588	3 893	675	4 569
September	3 569	597	4 166	3 471	632	4 102	3 744	676	4 419
October	3 677	560	4 237	3 609	623	4 232	3 605	670	4 275
November	3 803	672	4 475	3 635	705	4 340	3 524	658	4 182
December	3 624	718	4 342	3 425	666	4 092	3 509	640	4 149
January	2 603	442	3 045	3 512	599	4 111	3 534	622	4 156
February	3 355	568	3 923	3 428	610	4 037	3 566	605	4 172
March	4 165	644	4 809	3 820	552	4 372	3 604	590	4 194
April	3 258	558	3 816	3 628	596	4 224	3 632	576	4 208

Source: Transport SA.

11

ACTUAL PRIVATE NEW CAPITAL EXPENDITURE, BY SELECTED INDUSTRY AND TYPE OF ASSET

Period	Industry			Total	Type of asset	
	Mining	Manufacturing	Other selected industries		New buildings and structures	Equipment, plant and machinery
ANNUAL (\$m)						
1995-96	196	756	921	1 873	358	1 515
1996-97	489	840	1 251	2 580	595	1 985
1997-98	1 366	820	1 006	3 193	793	2 400
QUARTERLY, ORIGINAL (\$m)						
1997-98						
December	447	265	241	953	196	757
March	360	168	193	721	188	534
June	215	217	370	802	250	552
1998-99						
September	125	154	322	601	157	444
December	150	248	267	665	171	494
March	98	187	222	507	97	410
QUARTERLY, TREND (\$m)						
1997-98						
December	n.a.	n.a.	n.a.	822	187	635
March	n.a.	n.a.	n.a.	822	214	608
June	n.a.	n.a.	n.a.	761	218	543
1998-99						
September	n.a.	n.a.	n.a.	673	186	487
December	n.a.	n.a.	n.a.	600	144	456
March	n.a.	n.a.	n.a.	563	114	450

Source: State Estimates of Private New Capital Expenditure (Cat. no. 5646.0).

12

TOURIST ACCOMMODATION

Period	Hotels with facilities				Motels and guesthouses				Serviced apartments			
	Estab-lish-ments	Guest rooms	Room occu-pancy	Takings	Estab-lish-ments	Flats, units and houses	Room occu-pancy	Takings	Estab-lish-ments	Guest rooms	Room occu-pancy	Takings
	no.	no.	%	\$'000	no.	no.	%	\$'000	no.	no.	%	\$'000
1996-97												
June	61	3 819	54.1	18 460	152	5 197	50.3	16 835	17	624	61.4	2 624
September	62	3 875	56.2	19 193	150	5 179	51.3	17 420	17	624	57.9	2 714
December	61	3 855	61.3	22 156	151	5 225	57.9	19 960	17	626	67.3	3 269
1997-98												
June	61	4 048	53.6	19 048	147	5 136	52.8	17 773	19	750	59.4	3 551
September	61	4 048	57.2	21 068	146	5 112	51.7	17 805	19	740	56.3	3 667
December	61	4 053	63.0	24 954	146	5 135	58.1	19 990	22	888	66.0	4 884

Source: Tourist Accommodation, Australia (Cat. no. 8635.0).

Period	Houses		Total dwelling units		New residential building \$m	Alterations and additions to residential building \$m	Total residential building \$m	Non-residential building \$m	Total building \$m
	Private sector	Total	Private sector	Total					
	no.	no.	no.	no.					
ANNUAL									
1995-96	4 938	5 117	5 760	5 968	469	119	589	566	1 155
1996-97	5 512	5 608	6 148	6 264	516	117	632	581	1 213
1997-98	6 187	6 380	6 997	7 215	630	128	758	602	1 360
MONTHLY, ORIGINAL									
1997-98									
April	461	472	491	502	44.0	9.6	53.6	34.6	88.3
May	515	527	588	602	55.3	9.2	64.4	38.2	102.6
June	610	641	771	810	70.0	10.2	80.3	36.5	116.8
1998-99									
July	654	660	893	901	78.6	11.8	90.4	40.2	130.6
August	528	536	622	634	58.5	10.6	69.1	72.1	141.2
September	600	625	717	742	103.4	13.1	116.5	46.9	163.5
October	518	542	561	585	55.5	10.8	66.3	40.5	106.9
November	540	553	587	606	58.0	12.4	70.4	58.3	128.7
December	489	496	556	563	50.3	10.0	60.3	53.5	113.7
January	361	371	434	444	45.6	9.5	55.1	68.0	123.1
February	494	510	591	607	58.2	12.4	70.6	118.4	189.0
March	644	683	711	750	69.1	14.6	83.7	56.1	139.8
April	487	497	558	568	56.6	10.8	67.4	22.7	90.1
MONTHLY, TREND									
1997-98									
April	548	563	639	656	57.2	9.9	67.1	37.1	104.2
May	545	559	654	670	60.2	10.1	70.3	37.3	107.5
June	540	555	664	678	63.9	10.3	74.2	38.6	112.8
1998-99									
July	537	552	663	679	66.8	10.5	77.4	40.3	117.7
August	534	551	651	670	68.1	10.6	78.7	44.1	122.8
September	530	548	627	649	67.1	10.6	77.8	50.8	128.6
October	525	545	602	627	64.4	10.8	75.3	58.4	133.6
November	522	543	589	615	61.4	11.3	72.7	64.1	136.8
December	527	547	596	621	59.8	11.8	71.6	65.9	137.4
January	534	553	612	635	59.9	12.4	72.3	63.5	135.8
February	540	557	623	644	61.3	12.8	74.1	58.1	132.1
March	546	561	629	648	62.7	13.0	75.8	51.1	126.9
April	551	565	638	654	66.5	13.1	79.7	41.8	121.4

Source: Building Approvals, South Australia (Cat. no. 8731.4).

14

BUILDING COMMENCEMENTS

Period	New houses		Total dwelling units(a)		New residential building \$m	Alterations and additions to residential building \$m	Non-residential building		
	Private sector	Total	Private sector	Total			Private sector	Total	Total building
	no.	no.	no.	no.			\$m	\$m	\$m
1995-96	4 837	5 071	5 691	5 960	496.5	121.7	452.8	631.8	1 250.0
1996-97	5 057	5 112	5 727	5 789	496.3	116.9	423.4	568.8	1 181.9
1997-98	5 628	5 823	6 437	6 653	614.7	134.5	419.0	550.7	1 299.9
1996-97									
December	1 245	1 262	1 513	1 530	133.8	33.8	85.3	113.2	280.8
March	1 099	1 102	1 242	1 247	106.3	26.2	76.6	121.2	253.6
June	1 522	1 541	1 670	1 691	147.5	30.7	193.5	230.2	408.4
1997-98									
September	1 354	1 402	1 489	1 541	131.9	31.6	84.5	112.3	275.8
December	1 531	1 588	1 841	1 906	179.8	33.8	139.2	174.1	387.7
March	1 409	1 436	1 617	1 648	150.1	38.7	68.1	95.2	284.0
June	1 334	1 397	1 490	1 558	152.9	30.4	134.5	169.1	352.4
1998-99									
September	1 563	1 610	1 927	1 980	184.7	35.0	89.5	131.1	350.7
December	1 611	1 666	1 858	1 932	228.0	33.7	90.1	128.9	390.6

(a) Includes conversions.

Source: *Building Activity, South Australia* (Cat. no. 8752.4).

VALUE OF BUILDING WORK DONE AND COMPLETED DURING PERIOD

Period	New houses		New residential building			Non-residential building		Total building		
	Private sector	Total	Private sector	Total	Alterations and additions to residential building	Total residential building	Private sector	Total	Private sector	Total
	\$m	\$m	\$m	\$m	\$m	\$m	\$m	\$m	\$m	\$m
VALUE OF BUILDING WORK DONE										
1995-96	441.4	460.5	512.9	534.8	130.6	665.4	311.4	542.1	953.2	1 207.5
1996-97	433.9	438.9	485.2	490.4	122.3	612.7	444.2	663.3	1 049.8	1 275.9
1997-98	522.9	535.7	590.4	605.4	131.6	737.0	538.9	685.0	1 259.3	1 422.0
1996-97										
December	109.1	110.6	121.3	122.8	35.4	158.2	119.6	189.8	276.0	348.0
March	99.9	100.3	114.1	114.6	26.8	141.4	100.8	147.8	241.6	289.2
June	127.6	128.7	140.5	141.7	32.0	173.7	140.4	181.9	312.8	355.6
1997-98										
September	122.5	125.8	136.3	139.9	32.9	172.8	149.8	186.7	318.5	359.4
December	134.0	137.7	152.3	157.1	36.2	193.3	157.7	197.7	345.2	391.0
March	130.5	132.8	147.4	149.9	31.4	181.3	119.1	149.2	297.7	330.4
June	135.9	139.4	154.5	158.5	31.2	189.7	112.3	151.5	297.9	341.1
1998-99										
September	150.9	155.8	175.8	180.9	39.8	220.7	135.5	162.9	350.5	383.6
December	147.9	151.6	181.8	186.0	39.8	225.8	118.7	157.2	340.1	383.0
VALUE OF BUILDING WORK COMPLETED										
1995-96	459.9	481.8	530.9	556.5	132.0	688.6	292.8	494.4	953.9	1 183.0
1996-97	408.9	414.1	461.8	467.1	123.6	590.7	328.2	584.3	911.8	1 175.0
1997-98	504.1	514.7	561.8	574.7	125.0	699.7	571.2	744.0	1 256.3	1 443.7
1996-97										
December	100.0	102.0	111.2	113.2	35.8	149.0	81.0	129.9	227.4	278.8
March	94.9	95.7	108.3	109.2	25.3	134.5	92.6	134.9	226.2	269.4
June	119.7	120.4	130.5	131.1	32.6	163.7	86.4	228.5	249.5	392.2
1997-98										
September	118.3	120.5	130.5	132.7	34.3	166.9	68.9	102.6	233.1	269.5
December	148.3	151.6	168.9	172.8	39.2	212.1	310.5	369.2	517.7	581.2
March	112.2	114.5	126.4	129.3	26.9	156.3	81.7	124.3	235.0	280.5
June	125.3	128.1	136.0	139.8	24.6	164.4	110.1	148.0	270.6	312.5
1998-99										
September	148.1	152.4	161.1	165.8	36.1	201.9	68.2	106.7	264.9	308.6
December	165.5	171.2	186.9	192.7	49.0	241.8	173.7	202.1	409.3	443.8

Source: Building Activity, South Australia (Cat. no. 8752.4).

<i>Period</i>	<i>Pigmeat</i>	<i>Beef</i>	<i>Mutton</i>	<i>Lamb</i>	<i>Gas</i>	<i>Coal(a)</i>	<i>Sawn timber(b)</i>
	<i>tonnes</i>	<i>tonnes</i>	<i>tonnes</i>	<i>tonnes</i>	<i>m MJ</i>	<i>tonnes</i>	<i>m³</i>
1995-96	31 695	89 704	55 600	37 735	76 074	2 409 120	413 545
1996-97	29 842	85 478	51 778	34 890	76 495	2 633 820	333 691
1997-98	26 384	80 924	58 554	38 224	78 440	2 815 870	361 257
1997-98							
September	7 431	18 704	10 889	6 594	21 942	752 868	91 537
December	6 301	22 324	16 769	9 963	18 997	610 208	83 957
March	6 731	21 110	20 144	10 561	18 098	718 990	89 540
June	5 921	18 786	10 752	11 106	19 404	733 804	96 223
1998-99							
September	5 253	15 129	10 342	10 733	23 573	748 575	95 339
December	4 646	17 514	15 721	10 982	19 718	671 040	94 578
March	5 174	14 670	14 093	10 079	19 343	826 095	88 282

(a) Data supplied by Flinders Power Pty Ltd.

(b) From Australian softwood logs only.

Source: *Livestock Products, Australia (Cat. no. 8752.4); Unpublished data, Manufacturing Production.*

<i>Period</i>	<i>Food</i>	<i>Clothing</i>	<i>Housing</i>	<i>Household equipment and operation</i>	<i>Transport- ation</i>	<i>Tobacco and alcohol</i>	<i>Health and personal care</i>	<i>Recreation and education</i>	<i>All groups</i>
ANNUAL AVERAGE (1989-90 = 100.0)									
1995-96	118.2	105.1	103.6	112.1	124.5	160.1	158.9	118.0	121.2
1996-97	120.8	105.5	98.9	113.4	124.6	165.3	165.4	121.1	122.3
1997-98	122.7	105.7	90.7	113.7	122.1	169.3	165.4	124.7	121.6
QUARTERLY (1989-90 = 100.0)									
1997-98									
December	122.0	106.2	90.2	113.6	122.3	168.8	164.1	123.6	121.2
March	122.9	105.1	89.9	113.7	121.2	170.7	167.8	125.5	121.7
June	123.7	105.9	90.3	113.9	121.8	170.5	171.1	126.1	122.4
1998-99									
September	125.9	105.3	91.2	113.7	121.8	170.7	171.8	125.9	123.0
December	128.2	105.4	91.9	113.9	121.3	171.4	170.9	126.5	123.6
March	128.0	103.7	92.2	112.3	120.9	171.8	156.6	128.6	122.7
PERCENTAGE CHANGE FROM SAME QUARTER OF PREVIOUS YEAR									
1997-98									
December	1.1	0.2	-10.2	-0.2	-2.5	2.4	-0.5	3.2	-1.1
March	1.4	0.0	-7.8	0.4	-3.5	3.3	0.1	2.6	-0.7
June	1.5	0.7	-4.0	0.3	-0.7	2.4	1.8	2.6	0.4
1998-99									
September	3.2	-0.1	-1.1	0.1	-1.1	2.1	8.3	1.8	1.5
December	5.1	-0.8	1.9	0.3	-0.8	1.5	4.1	2.3	2.0
March	4.1	-1.3	2.6	-1.2	-0.2	0.6	-6.7	2.5	0.8
PERCENTAGE CHANGE FROM PREVIOUS QUARTER									
1997-98									
December	0.0	0.8	-2.2	0.0	-0.7	1.0	3.5	-0.1	0.0
March	0.7	-1.0	-0.3	0.1	-0.9	1.1	2.3	1.5	0.4
June	0.7	0.8	0.4	0.2	0.5	-0.1	2.0	0.5	0.6
1998-99									
September	1.8	-0.6	1.0	-0.2	0.0	0.1	0.4	-0.2	0.5
December	1.8	0.1	0.8	0.2	-0.4	0.4	-0.5	0.5	0.5
March	-0.2	-1.6	0.3	-1.4	-0.3	0.2	-8.4	1.7	-0.7

Source: Consumer Price Index (Cat. no. 6401.0).

18

ESTIMATED RESIDENT POPULATION AND COMPONENTS OF POPULATION CHANGE

Period	Net migration			Total increase	Population at end of period
	Natural increase	Interstate	Overseas(a)		
1995-96	7 500	-6 192	3 653	4 824	1 474 253
1996-97	6 951	-4 628	3 104	5 427	1 479 680
1997-98	6 574	-3 254	4 294	7 614	1 487 294
1996-97					
March	2 051	-1 037	1 142	2 156	1 478 734
June	1 672	-862	136	946	1 479 680
1997-98					
September	1 322	-755	1 124	1 691	1 481 371
December	1 544	-1 098	598	1 044	1 482 415
March	2 083	-591	2 027	3 519	1 485 934
June	1 625	-810	545	1 360	1 487 294
1998-99					
September	1 188	-422	778	1 544	1 488 838
December	1 775	-901	707	1 581	1 490 419

(a) Includes category jumping.

Source: Australian Demographic Statistics (Cat. no. 3101.0).

19

BIRTHS, DEATHS, MARRIAGES AND DIVORCES

Period	Registrations			
	Births	Deaths	Marriages	Divorces
1995-96	18 839	11 339	8 211	4 236
1996-97	18 576	11 625	8 003	4 362
1997-98	18 006	11 432	7 988	4 113
1996-97				
March	4 573	2 522	2 436	1 018
June	4 586	2 914	1 750	1 005
1997-98				
September	4 542	3 220	1 079	1 034
December	4 487	2 943	2 680	1 058
March	4 557	2 474	2 405	1 016
June	4 420	2 795	1 824	1 005
1998-99				
September	4 648	3 460	1 294	1 053
December	4 545	2 770	2 499	1 085

Source: Australian Demographic Statistics (Cat. no. 3101.0).

Period	Employed full-time		Employed part-time		Total employed		Unemployed		Labour force	
	Males	Females	Males	Females	Males	Females	Males	Females	Males	Females
ANNUAL AVERAGE ('000)										
1995-96	325.2	150.0	45.5	136.7	370.7	286.7	42.6	26.0	413.2	312.7
1996-97	320.8	150.5	48.6	140.7	369.4	291.2	42.1	27.5	411.5	318.7
1997-98	317.5	145.9	48.8	136.4	366.3	282.3	42.1	28.8	408.4	311.0
MONTHLY, ORIGINAL ('000)										
1997-98										
March	312.9	148.1	50.1	129.7	363.1	277.9	41.3	32.1	404.4	309.9
April	313.3	145.2	52.0	133.6	365.3	278.8	38.7	28.6	404.0	307.3
May	310.5	142.7	48.6	132.2	359.1	274.8	42.0	30.0	401.1	304.8
June	314.2	140.8	49.7	131.8	363.9	272.5	38.7	29.2	402.6	301.7
1998-99										
July	317.9	145.3	44.6	128.0	362.5	273.3	42.3	26.5	404.8	299.8
August	316.6	144.1	47.0	131.1	363.6	275.2	42.6	29.1	406.2	304.3
September	322.6	147.7	44.7	136.6	367.3	284.3	44.6	27.4	411.9	311.7
October	318.8	148.8	47.1	137.7	366.0	286.4	40.5	24.1	406.5	310.5
November	320.5	147.1	46.6	139.0	367.1	286.1	42.7	25.2	409.8	311.4
December	323.6	150.8	51.0	141.7	374.6	292.5	42.1	24.7	416.6	317.3
January	315.4	147.2	49.5	131.2	364.9	278.4	45.4	29.5	410.3	308.0
February	320.7	150.6	51.1	134.4	371.8	285.0	40.6	28.3	412.4	313.3
March	322.9	147.4	48.0	141.1	370.8	288.5	38.6	27.7	409.4	316.2
April	316.4	149.2	50.9	138.6	367.4	287.8	35.2	24.0	402.5	311.8
May	318.6	152.9	53.7	132.8	372.3	285.7	36.6	27.2	408.9	312.9
MONTHLY, TREND ('000)										
1997-98										
March	315.9	146.5	48.0	131.5	363.9	278.0	41.3	29.4	405.2	307.4
April	315.1	145.6	48.1	130.1	363.2	275.7	41.3	29.7	404.5	305.4
May	314.9	145.0	48.1	129.2	363.0	274.2	41.7	29.8	404.7	304.0
June	315.5	144.9	47.7	129.0	363.2	273.9	42.1	29.7	405.3	303.6
1998-99										
July	316.7	145.3	47.0	129.7	363.7	275.0	42.6	29.4	406.3	304.4
August	317.8	146.0	46.7	131.4	364.5	277.4	43.0	28.7	407.5	306.1
September	318.3	146.7	47.1	133.9	365.4	280.6	43.2	27.8	408.6	308.4
October	318.5	147.2	47.9	136.4	366.4	283.6	43.0	26.9	409.4	310.5
November	318.5	147.2	48.9	138.8	367.4	286.0	42.5	26.3	409.9	312.2
December	318.7	147.2	49.6	139.9	368.3	287.1	41.7	26.0	410.0	312.9
January	319.3	147.5	49.8	139.8	369.1	287.3	40.7	25.7	409.8	313.0
February	320.1	148.2	49.7	139.0	369.8	287.2	39.5	25.7	409.3	312.9
March	321.1	149.2	49.4	137.8	370.5	287.0	38.2	25.8	408.7	312.8
April	321.8	150.3	49.4	136.5	371.2	286.8	37.2	25.9	408.4	312.7
May	322.3	151.5	49.5	135.1	371.8	286.6	36.2	25.9	408.0	312.5

(a) Population aged 15 and over.

Source: Labour Force, Australia, Preliminary (Cat. no. 6202.0).

21

CIVILIAN LABOUR FORCE, UNEMPLOYMENT AND PARTICIPATION RATES(a)

Period	Civilian population			Unemployment rate			Participation rate		
	Males aged 15 and over	Females aged 15 and over	Persons aged 15-19	Males all ages	Females all ages	Persons all ages	Males	Females	Persons
	'000	'000	%	%	%	%	%	%	%
ANNUAL AVERAGE									
1995-96	576.2	597.1	27.2	10.3	8.3	9.5	71.7	52.4	61.9
1996-97	579.8	600.6	23.7	10.2	8.6	9.5	71.0	53.1	61.9
1997-98	583.9	604.5	23.2	10.3	9.2	9.8	70.8	51.5	61.0
MONTHLY, ORIGINAL									
1997-98									
January	579.1	605.6	26.5	11.1	10.7	10.9	70.7	50.8	60.5
February	579.5	606.0	24.8	11.1	10.0	10.6	70.6	51.3	60.7
March	579.9	606.4	26.1	10.2	10.3	10.3	69.7	51.1	60.2
April	580.2	606.7	23.0	9.6	9.3	9.5	69.6	50.7	59.9
May	580.5	607.0	24.8	10.5	9.8	10.2	69.1	50.2	59.5
June	580.7	607.3	19.9	9.6	9.7	9.6	69.3	49.7	59.3
1998-99									
July	581.1	607.7	23.0	10.5	8.8	9.8	69.7	49.3	59.3
August	581.4	608.0	23.3	10.5	9.6	10.1	69.9	50.0	59.7
September	581.7	608.4	23.1	10.8	8.8	9.9	70.8	51.2	60.8
October	582.2	608.8	23.1	10.0	7.8	9.0	69.8	51.0	60.2
November	582.6	609.2	21.2	10.4	8.1	9.4	70.3	51.1	60.5
December	583.0	609.7	19.8	10.1	7.8	9.1	71.5	52.0	61.5
January	583.4	610.1	20.1	11.1	9.6	10.4	70.3	50.5	60.2
February	583.8	610.5	20.4	9.8	9.0	9.5	70.6	51.3	60.8
March	584.2	610.9	21.8	9.4	8.8	9.1	70.1	51.8	60.7
April	584.6	611.3	17.9	8.7	7.7	8.3	68.9	51.0	59.7
May	585.0	611.6	24.8	8.9	8.7	8.8	69.9	51.2	60.3
MONTHLY, TREND									
1997-98									
January	n.a.	n.a.	n.a.	10.3	9.3	9.9	70.5	51.5	60.8
February	n.a.	n.a.	n.a.	10.2	9.4	9.9	70.1	51.1	60.4
March	n.a.	n.a.	n.a.	10.2	9.6	9.9	69.9	50.7	60.1
April	n.a.	n.a.	n.a.	10.2	9.7	10.0	69.7	50.3	59.8
May	n.a.	n.a.	n.a.	10.3	9.8	10.1	69.7	50.1	59.7
June	n.a.	n.a.	n.a.	10.4	9.8	10.1	69.8	50.0	59.7
1998-99									
July	n.a.	n.a.	n.a.	10.5	9.6	10.1	69.9	50.1	59.8
August	n.a.	n.a.	n.a.	10.6	9.4	10.0	70.1	50.3	60.0
September	n.a.	n.a.	n.a.	10.6	9.0	9.9	70.2	50.7	60.2
October	n.a.	n.a.	n.a.	10.5	8.7	9.7	70.3	51.0	60.5
November	n.a.	n.a.	n.a.	10.4	8.4	9.5	70.4	51.2	60.6
December	n.a.	n.a.	n.a.	10.2	8.3	9.3	70.3	51.3	60.6
January	n.a.	n.a.	n.a.	9.9	8.2	9.2	70.2	51.3	60.6
February	n.a.	n.a.	n.a.	9.6	8.2	9.0	70.1	51.3	60.5
March	n.a.	n.a.	n.a.	9.4	8.2	8.9	70.0	51.2	60.4
April	n.a.	n.a.	n.a.	9.1	8.3	8.7	69.9	51.2	60.3
May	n.a.	n.a.	n.a.	8.9	8.3	8.6	69.7	51.1	60.2

(a) Population aged 15 and over.

Source: Labour Force, Australia, Preliminary (Cat. no. 6202.0).

AVERAGE WEEKLY EARNINGS OF EMPLOYEES

Period	Males			Females			Persons		
	Full-time adult ordinary time earnings	Full-time adult total earnings	All males total earnings	Full-time adult ordinary time earnings	Full-time adult total earnings	All females total earnings	Full-time adult ordinary time earnings	Full-time adult total earnings	All employees total earnings
ANNUAL AVERAGE (\$ per week)									
1995-96	653.80	703.20	620.10	555.90	568.50	403.90	622.80	660.10	520.70
1996-97	678.20	735.10	636.90	575.10	589.40	408.70	644.30	687.20	529.80
1997-98	705.60	755.05	646.28	606.05	619.33	438.50	670.53	707.20	545.70
QUARTERLY, ORIGINAL (\$ per week)									
1997-98									
21 November	689.70	739.90	631.70	594.20	607.40	433.90	655.00	691.80	533.90
20 February	715.10	764.60	656.10	626.20	642.10	447.70	683.60	721.20	553.60
15 May	713.80	759.50	646.30	620.10	634.30	452.40	680.10	714.40	552.80
1998-99									
21 August	737.50	785.60	670.40	623.50	636.30	462.10	694.70	729.60	569.60
20 November	745.20	811.60	679.00	631.50	652.90	471.50	702.50	752.00	580.30
19 February	739.90	796.20	677.40	632.00	651.90	466.50	699.60	742.30	574.90
QUARTERLY, TREND (\$ per week)									
1997-98									
21 November	700.90	750.90	645.70	600.90	613.40	434.60	665.70	702.80	543.20
20 February	707.10	753.40	643.70	613.90	627.50	444.10	673.50	708.20	545.60
15 May	720.20	768.70	653.80	623.20	638.00	454.20	684.90	720.80	556.70
1998-99									
21 August	733.40	786.90	668.00	626.90	643.00	462.30	694.10	733.50	569.20
20 November	741.50	798.60	677.30	629.30	647.20	468.20	699.20	741.90	576.90
19 February	746.10	805.50	681.80	632.60	652.90	471.60	702.90	748.30	580.00

Source: Average Weekly Earnings, States and Australia (Cat. no. 6302.0).

23

SECURED HOUSING FINANCE COMMITMENTS

Period	Original		Seasonally adjusted		Trend	
	Dwelling units	Value	Dwelling units	Value	Dwelling units	Value
	no.	\$m	no.	\$m	no.	\$m
1997-98						
February	3 107	254.1	3 163	259.0	3 077	256.0
March	3 349	282.8	2 982	249.0	3 117	260.0
April	3 227	271.5	3 229	272.0	3 157	264.0
May	3 054	258.0	3 157	264.0	3 175	267.0
June	3 581	307.0	3 288	283.0	3 146	266.0
1998-99						
July	3 144	269.0	3 117	266.0	3 076	262.0
August	2 787	233.0	2 985	249.0	2 987	258.0
September	2 807	242.0	2 807	245.0	2 911	255.0
October	2 685	238.0	2 740	247.0	2 875	257.0
November	3 000	278.0	2 879	267.0	2 892	262.0
December	3 151	294.0	3 153	290.0	2 943	269.0
January	2 392	216.0	2 850	259.0	2 999	275.0
February	3 019	274.0	3 073	279.0	3 040	279.0
March	3 718	344.0	3 182	292.0	3 070	282.0
April	2 966	276.0	2 978	277.0	3 088	284.0

Source: Housing Finance for Owner Occupation, Australia (Cat. no. 5609.0).

24

FINANCE COMMITMENTS

Period	Commercial finance commitments			Personal finance commitments			
	Fixed loan facilities	Revolving credit facilities	Total commercial finance commitments	Fixed loan facilities	Revolving credit facilities	Total personal finance commitments	Total lease finance commitments
	\$m	\$m	\$m	\$m	\$m	\$m	\$m
1997-98							
February	281.0	128.1	409.2	118.5	90.9	209.4	18.6
March	361.5	156.7	518.2	131.6	119.3	250.9	24.2
April	303.5	162.8	466.3	114.0	113.6	227.6	16.1
May	299.6	156.7	456.3	114.6	121.0	235.6	23.0
June	432.7	346.6	779.2	126.5	139.5	265.9	37.5
1998-99							
July	317.0	188.2	505.2	116.0	133.6	249.6	32.3
August	258.0	232.4	490.4	103.9	144.2	248.1	15.5
September	362.1	306.9	669.0	117.2	131.7	248.8	16.4
October	275.6	181.7	457.3	108.8	128.2	237.0	15.3
November	355.3	166.0	521.2	116.2	140.0	256.2	22.6
December	305.8	268.2	574.0	119.0	155.1	274.2	17.4
January	189.3	120.6	309.9	119.0	117.6	236.6	21.8
February	288.2	199.0	487.2	122.3	133.2	255.5	19.3
March	489.8	390.3	880.1	147.2	174.1	321.3	24.6
April	268.5	459.1	727.6	112.7	158.9	271.6	32.8

Source: Unpublished data, PC Ausstats.

PUBLICATIONS SOURCE INDEX

- (1) *Australian National Accounts, Quarterly State Details*
(Cat. no. 5206.0.40.001)
- (2) *International Merchandise Trade, Australia*
(Cat. no. 5422.0) Quarterly
- (3) *Retail Trade, Australia* (Cat. no. 8501.0) Monthly
- (4) *New Motor Vehicles Registrations, Australia, Preliminary*
(Cat. no. 9301.0) Monthly
- (5) *State Estimates of Private New Capital Expenditure*
(Cat. no. 5646.0) Quarterly
- (6) *Tourist Accommodation, Australia* (Cat. no. 8635.0) Quarterly
- (7) *Building Approvals, Australia* (Cat. no. 8731.0) Monthly
- (8) *Building Activity, Australia* (Cat. no. 8752.0) Quarterly
- (8a) *Building Activity, Australia, Dwelling Unit Commencements, Preliminary* (Cat. no. 8750.0) Quarterly
- (9) *Engineering Construction Activity, Australia*
(Cat. no. 8762.0) Quarterly
- (10) *Manufacturing Production, Australia, Preliminary*
(Cat. no. 8301.0) Quarterly
- (11) *Livestock Products, Australia* (Cat. no. 7215.0) Quarterly
- (12) *Actual and Expected Private Mineral Exploration, Australia*
(Cat. no. 8412.0) Quarterly
- (13) *Consumer Price Index* (Cat. no. 6401.0) Quarterly
- (14) *Price Index of Materials Used in House Building, Six State Capital Cities and Canberra* (Cat. no. 6408.0) Quarterly
- (15) *Price Index of Materials Used in Building Other Than House Building, Six State Capital Cities and Canberra*
(Cat. no. 6407.0) Quarterly
- (16) *House Price Indexes: Eight Capital Cities*
(Cat. no. 6416.0) Quarterly
- (17) *Australian Demographic Statistics* (Cat. no. 3101.0) Quarterly
- (18) *Labour Force, Australia, Preliminary* (Cat. no. 6202.0) Monthly
- (19) *Job Vacancies and Overtime, Australia*
(Cat. no. 6354.0) Quarterly
- (20) *Industrial Disputes, Australia* (Cat. no. 6321.0) Monthly
- (21) Unpublished overseas arrival and departure statistics
- (22) *Average Weekly Earnings, States and Australia*
(Cat. no. 6302.0) Quarterly
- (23) *Wage Cost Index, Australia* (Cat. no. 6345.0) Quarterly
- (24) *Housing Finance for Owner Occupation, Australia*
(Cat. no. 5609.0) Monthly
- (25) Unpublished statistics available from PC AUSSTATS
- (26) *Reserve Bank of Australia Bulletin*

SELF-HELP ACCESS TO STATISTICS

- CPI INFOLINE* For current and historical Consumer Price Index data, call 1902 981 074 (call cost 75c per minute).
- DIAL-A-STATISTIC* For the latest figures for National Accounts, Balance of Payments, Labour Force, Average Weekly Earnings, Estimated Resident Population and the Consumer Price Index call 1900 986 400 (call cost 75c per minute).
- INTERNET* www.abs.gov.au
- LIBRARY* A range of ABS publications is available from public and tertiary libraries Australia-wide. Contact your nearest library to determine whether it has the ABS statistics you require.

WHY NOT SUBSCRIBE?

- PHONE* +61 1300 366 323
- FAX* +61 03 9615 7848

CONSULTANCY SERVICES

ABS offers consultancy services on a user pays basis to help you access published and unpublished data. Data that is already published and can be provided within 5 minutes is free of charge. Statistical methodological services are also available. Please contact:

<i>INQUIRIES</i>	<i>City</i>	<i>By phone</i>	<i>By fax</i>
	Canberra	02 6252 6627	02 6207 0282
	Sydney	02 9268 4611	02 9268 4668
	Melbourne	03 9615 7755	03 9615 7798
	Brisbane	07 3222 6351	07 3222 6283
	Perth	08 9360 5140	08 9360 5955
	Adelaide	08 8237 7400	08 8237 7566
	Hobart	03 6222 5800	03 6222 5995
	Darwin	08 8943 2111	08 8981 1218

POST Client Services, ABS, PO Box 10, Belconnen ACT 2616

EMAIL client.services@abs.gov.au



2130740007996
ISSN 1039-8880

RRP \$19.00